



TATACHILLA
LUTHERAN COLLEGE

Believe Become Belong



Prospectus 2024

Tatachilla Lutheran College
is built on Kurna Country.

We acknowledge the Traditional Owners
and Custodians of the lands throughout
South Australia and respect and support
their enduring spiritual relationship with
their land, waters and community.

The college is committed to supporting
lasting healing and reconciliation with
First Nations peoples and ensuring that
every child learns and respects the spiritual
and ancestral history of our country.



The Principal welcomes you



Welcome from the Principal

Marni niina pudni

At Tatachilla, we live and learn by our college motto: *believe, become, belong.*

This means that our students are nourished in an environment that values self-worth, compassion, kinship, personal growth and the creation of lasting relationships through shared experiences.

We understand that all children bring their own unique experiences, skills, hopes and expectations to our college community. We meet them where they are, respond to their ideas and value their intelligence.

Every child at Tatachilla is supported to flourish as a whole human being – intellectually, socially, emotionally, physically and spiritually – and to forge a life of purpose and meaning.

In order to become the best version of themselves, our students aim high and live with a spirit of daring and adventure. They are encouraged to continually learn from their experiences, develop their abilities over time, accept setbacks as opportunities for growth and persist in the achievement of their goals and dreams. They are also equipped to be self-aware and take responsibility for their daily experiences and personal destinies.

Tatachilla Lutheran College is a faith school and as such we teach our students the love of Christ. We are committed to helping all students discover and celebrate their God-given gifts, uphold Christian values and pursue their own faith journey.

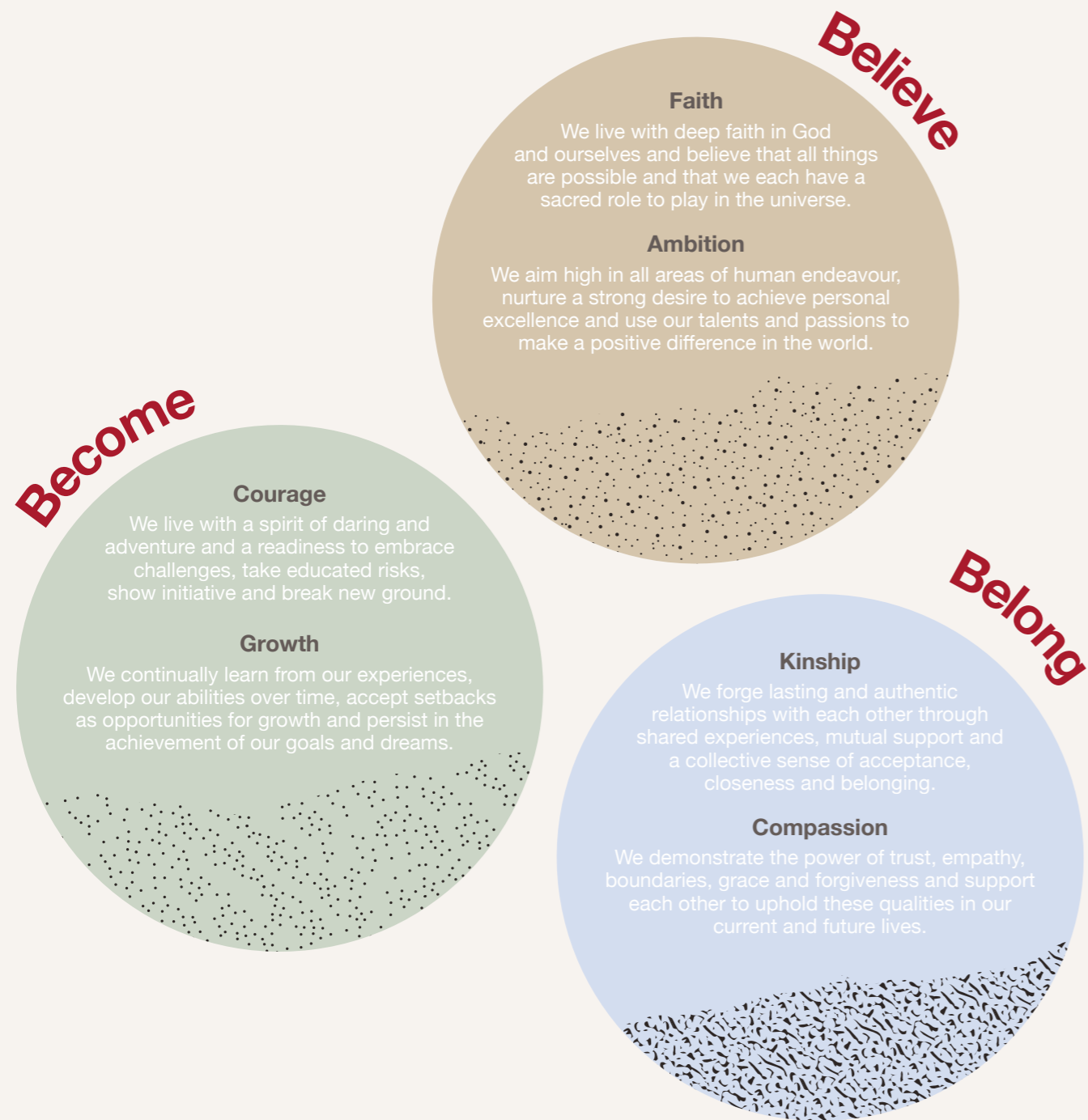
In a hurried world, our college offers students connection, community and a spirit of calm. Our undulating terrain provides students with the necessary space and tranquility to imagine and become.

As a mother of two daughters, I am keenly aware of the importance of choosing the right school for your child, not only as a place of academic learning, but also as a place of memory-making, identity formation and personal growth.

Thank you for considering Tatachilla Lutheran College as your school of choice.

Alison Thacker
Acting Principal

Living and learning at **Tatachilla**



TATACHILLA LUTHERAN COLLEGE

Twilight FOOD & Affair

FRIDAY 22 MARCH 2024
4.30PM – 9PM

A magical night of family fun



LOCAL FOOD + WINE • CARNIVAL RIDES • LIVE ENTERTAINMENT • FIREWORKS • GOLD COIN ENTRY



TATACHILLA
LUTHERAN COLLEGE

Book your food truck or become an event sponsor at tatachilla.sa.edu.au

211 Tatachilla Road McLaren Vale



Wellbeing is integral to the daily life of Tatchilla Lutheran College. It is taught, built and embedded into the fabric of our community and culture. It is not a specific program, but rather an attitude and approach to living and teaching which permeates everything we do at the college.

This approach involves a genuine concern for the spiritual, physical, social, intellectual and emotional health of all students and staff and the provision of a safe, supportive and respectful environment in which to learn and work. It is based on the Christian values which underpin our school, which are in turn derived directly from the Bible and our mission statement.

At Tatchilla Lutheran College, authentic wellbeing involves establishing and maintaining boundaries, learning from our mistakes, demonstrating empathy, care, concern and compassion for others and showing love and forgiveness.

Activities that help build a sense of wellbeing as well as close, caring relationships between peers and teachers include peer support, service learning, social interaction and student leadership. These activities are integrated into our pastoral care program, which encourages students to live a life of fulfilment, purpose and service to others.

Students' emotional and social development are further enhanced with the support of our resident pastor, professional counselling team, youth worker and cherished service dog, Misty.

Wellbeing





Tatachilla Lutheran College strives for educational excellence through a comprehensive and innovative curriculum that is supported by inspired teaching and learning. We focus on growing the learner, not just the learning itself.

Our entire student cohort – from our five-years-olds in Reception to our soon-to-graduate Year 12s – experience a contemporary education deeply connected to community, heritage and evolving career pathways. Our students are equipped with robust literacy and numeracy skills as well as the knowledge and capabilities to grow as leaders, problem solvers, critical thinkers, creative imagineers and strong collaborators. They are encouraged to apply flexibility, emotional intelligence and an enduring work ethic to all that they do.

Our Christ-centred approach also encourages students to pursue their own faith journey and develop lasting spiritual connections to their natural environment.

To this end, our God-given responsibility to nurture and sustain our planet is upheld across the curriculum through a range of ecological endeavours locally, nationally and internationally.

Teaching and learning at Tatachilla is a celebration of curious enquiry, joint exploration of the world and diverse enrichment opportunities. These opportunities encompass everything from drone workshops to Virtual Reality experiences; exposure to the latest STEM technologies to studies of classical and contemporary literature; opportunities to pursue elite athletics to participation in our acclaimed Arts Academy; and training in EcoEducation to joint ventures with the Australian Space Discovery Centre.

Learning is a lived experience, fuelled by the collective wisdom and aspirations of both students and teachers and the need for capable, inquisitive, globally-minded citizens who will have a positive and lasting impact on our world.

Excellence in teaching and learning

Junior years

Reception - Year 6

Tatachilla Lutheran College believes in working with families to provide their children with the best possible start to their schooling and a firm foundation for the Reception to Year 12 journey that awaits them. When we enrol a student in the junior years, we enrol a whole family. We invite all families to walk alongside us in a partnership of learning and growth.

The Reception year provides children with a safe and happy introduction to school life and its routines, environment and community. The teaching program helps prepare the children socially and emotionally for learning and focuses on the development of early skills in literacy, numeracy and fine and gross motor movement. These skills form the foundation for lifelong learning.

Play forms an important part of this early learning experience, contributing to the cognitive development of our students and giving them an opportunity to practice their skills in decision making, problem solving and investigation. Play-based learning at Tatachilla includes games with rules, imaginative and dramatic play, construction, STEM play and nature play.

To that end, our children have access to many outdoor play spaces, including our beloved seasonal creek and mud kitchen. Our beautifully maintained gardens – including our mini-beast and bush tucker gardens – also foster exploration, curiosity and imagination.

In addition to learning that takes place through play and within the home classroom, all students in the junior years have specialist lessons in Performing Arts, Japanese, Visual Arts and Physical Education.

Junior years curriculum

The junior years curriculum mirrors that of the Australian Curriculum, which in turn sets the expectations for what all young Australians should be taught, regardless of where they live in Australia or their background.

Our teachers in the junior years apply an integrated approach to teaching the college curriculum, which includes studies in History; Geography; Civics and Citizenship; Science; Physical Education; Arts; Music; and Japanese.

Additionally – and not included in the Australian Curriculum – our students in the junior years are taught Christian Studies.

Learning enhancement

Classroom teachers have oversight of all learning but consult with learning enhancement specialists to plan for those students who require additional support with their learning. The college has a policy of early learning intervention so that learners who have additional learning needs are not held back in future years and are able to reach their full learning potential.

In addition to the classroom learning program, children in the junior years take part in a lively program of excursions and have the opportunity to participate in music ensembles and the choir. They may also be nominated by their peers for the Student Representative Council. In the upper primary years, students also have the opportunity to be involved in SAPSASA sporting events, lunch-time clubs and the Year 6 leadership program.





Middle years

Year 7 - Year 9

Tatachilla Lutheran College offers a nurturing and dynamic learning environment for students in Years 7 to 9. Our highly qualified and dedicated teaching staff, together with our innovative curriculum, provide a challenging and supportive learning experience that prepares students for success in their future academic and personal pursuits.

One of the key benefits of Tatachilla Lutheran College is the school's strong focus on the development of the whole child. We understand that students in the middle years require a supportive and engaging environment in which they can grow and thrive. Our well-rounded curriculum covers studies in English, Mathematics, Science, Physical Education, the Humanities, the Arts and Technology.

The college understands that every student is unique, and our teachers strive to accommodate their individual learning styles and interests. This more personalised approach to teaching ensures that each student receives an important level of individual attention and support. We also place a strong emphasis on character development, helping students to develop strong values, resilience and self-esteem.

The middle years offer students a range of extracurricular activities and sporting programs that provide them with opportunities to explore their personal interests and develop new skills outside of the classroom. From Year 9 onwards students are eligible to apply to join our Advanced Athlete Academy and the Tatachilla Arts Academy.

Our commitment to student wellbeing and safety is unwavering, and we have implemented a range of measures to ensure that our campus is a safe and welcoming place for all students. These measures include the delivery of the Keeping Safe: Child Protection Curriculum - which equips young people with age-appropriate tools to keep themselves safe online and offline - and the Positive Education Enhanced Curriculum - which assist students to grasp the key concepts of wellbeing so they can live healthy and fulfilling lives.

In the senior years, Tatachilla Lutheran College takes learning to the next level, offering a comprehensive and challenging curriculum that prepares students for further education and beyond.

Our experienced teachers foster critical thinking and independent learning and provide students with the opportunity to participate in a range of work-related learning experiences, such as vocational placements and community service projects, that provide hands-on experience in real-world settings.

One of the key differences between the middle and senior years at the college is the level of responsibility and independence given to our students. In the senior years, students are encouraged to take ownership of their learning and to develop a strong sense of self-motivation, including use of our dedicated independent learning and study spaces.

Senior students are supported in their journey from adolescence to young adulthood and helped to take increasing responsibility for their own goals, as well as make academic choices that will benefit their future careers and forge their own educational pathway.

Graduates of Tatachilla Lutheran College embrace new challenges, overcome limitations, believe in themselves and approach the world with confidence, courage and passion.



Senior years

Year 10 - Year 12

creativity
memory

flexibility
employability
travelling
cultural awareness

Why Learn L
opp
confi



The Arts

All students are encouraged to be involved in the Arts – Music, Drama, Media Studies, Dance and Visual Art.

A wide range of Arts co-curricular and performance opportunities are available to students, including the biennial college musical, AV Club, dance teams, music ensembles, Visual Arts extension and the Tatachilla Arts Academy.

Music

All students from Reception to Year 8 are involved in Music Studies as part of Tatachilla's vibrant Arts curriculum, with students in Years 9-12 offered the opportunity to extend their studies up to SACE level. Music students also have the opportunity to perform as part of our many music ensembles.

Instrumental and vocal tuition is available to all students at the college, individually or in small groups. Students in Years 9-12 who are taking Music as a subject are required to participate in regular lessons on their main instrument.

Drama

Drama studies provides opportunities for students to engage with the world of theatre and film and a diverse range of innovative technologies. Through studying Drama, students are equipped with the 21st century skills of critical and creative thinking and collaborative problem solving. They are further enabled to explore the power of theatre in social commentary.

Students are involved in public performances, attend professional productions and make industry connections through workshops with current Arts professionals.

Media Studies

Media Studies students learn that media forms one of the most powerful cultural influences in modern society. Building knowledge and understanding of the key concepts of media - including media organisations, codes, conventions, audiences and representation - they explore a variety of media forms.

Dance

Dance forms a vibrant arm of our Arts programming here at Tatachilla. As well as being able to engage in curriculum studies in Dance from Years 9-12, Tatachilla offers a dynamic and invigorating extra-curricular Dance program. Students of all experience levels in Years 4-12 are able to engage in our dance team program at lunch and after school. Students are offered numerous public performance opportunities throughout the year, which include performing in the college's dance showcase; participating in dance competition as part of our Extension Program; and getting involved in community events such as the Onkaparinga Christmas Pageant.

Visual Art

Visual Art students have the opportunity to explore creative expression through a variety of different artistic mediums. Clay, ceramics, printmaking, sculpture and painting all form part of our Visual Art curriculum. Student work is shared with the community through exhibitions and students have the additional opportunity to engage in extra-curricular Visual Art opportunities by contributing to the college's musicals (set and prop design) and joining lunchtime Art Club and after school Art Extension.

Tatachilla Arts Academy

All Arts students in Years 8-12 are encouraged to apply to be part of our Tatachilla Arts Academy. This is an interdisciplinary extension program that enables students to major in the Arts vocation of their choice and contribute to unique, immersive theatre-making experiences.



House system

Tatatchilla Lutheran College has a 'House' system that is integral to college life and creates a sense of belonging and pride among our children and their families. All siblings belong to the same House. The House system enables students to develop lifelong skills in teamwork and leadership and know the important feeling of being part of a community that is larger than themselves.

Each House within the college is founded on the rock of Christ and as such, each House is named after a gemstone: Emerald (green); Ruby (red); Sapphire (blue); and Topaz (yellow). Different gemstones originate in different types of rocks and conditions and therefore have different characteristics. This reminds us that we are all unique parts of God's creation and that each House will naturally have its own distinctive personality.

Sporting achievement and sporting spirit are valued equally, with Houses competing against each other on Sport's Day for both the House Shield and the House Spirit Award.

Sporting opportunities

The college upholds a 'sport-for-all' ethos to enable students to develop personal competencies as well as contribute to team success. All school sport is undertaken during school time, and not on weekends, with students encouraged to join local sporting clubs in the region.

Every year, all students at Tatatchilla are invited to participate in the state-wide interschool sports knockout competition run by SAPSASA (South Australian Primary Schools Amateur Sports Association), which enables them to compete in more than 40 different sports, including (but not limited to) AFL; athletics; badminton; basketball; cricket; cross-country running; hockey; netball; soccer; swimming; surfing; tennis; touch football; triathlon; and volleyball. As part of this competition, students are also given the opportunity to compete in non-traditional sports, including equestrianism; golf; diving; and lawn bowls.

In Years 9-11, those students who are already competing at a state or national level in their chosen sport have the further opportunity to participate in Tatatchilla's Advanced Athlete Academy, which enables them to co-create an individual athlete plan and acquire additional skills in coaching and officiating; strength and conditioning; nutrition; sports rehabilitation; training principles and methods; and sports psychology.

Sporting life



Tatachilla Lutheran College upholds a holistic approach to environmental education and is committed to increasing student awareness of sustainability principles and the processes that underpin our natural ecosystems. Students are empowered with the environmental knowledge they need to take positive environmental action in their own lives and contribute positively to the world as local and global citizens.

The college is proud of its 3.4-hectare EcoClassroom Sanctuary, which has been modelled on the natural ecosystems that once existed in the McLaren Vale region. The area is home to native fauna including brush-tailed bettongs, long-nosed potoroos and tamar wallabies. Leftover recess and lunch scraps from students in the junior years are collected daily by 'bettong bucket monitors' and brought down to the sanctuary to provide food for the resident fauna as part of an ongoing initiative to connect students to nature and inspire them to care for their natural environment.

Students and visitors to the EcoClassroom Sanctuary experience hands-on activities through a range of learning activities involving art, conservation, biology and wellbeing.

Partnership with Softfoot Marsupial Sanctuary

Tatachilla Lutheran College has partnered with the Softfoot Marsupial Sanctuary to assist in the breeding and long-term management of local endangered species, including the brush-tailed bettong and long-nosed potoroo. The college works together with the Softfoot Marsupial Sanctuary to maintain genetic diversity for our native animal populations.

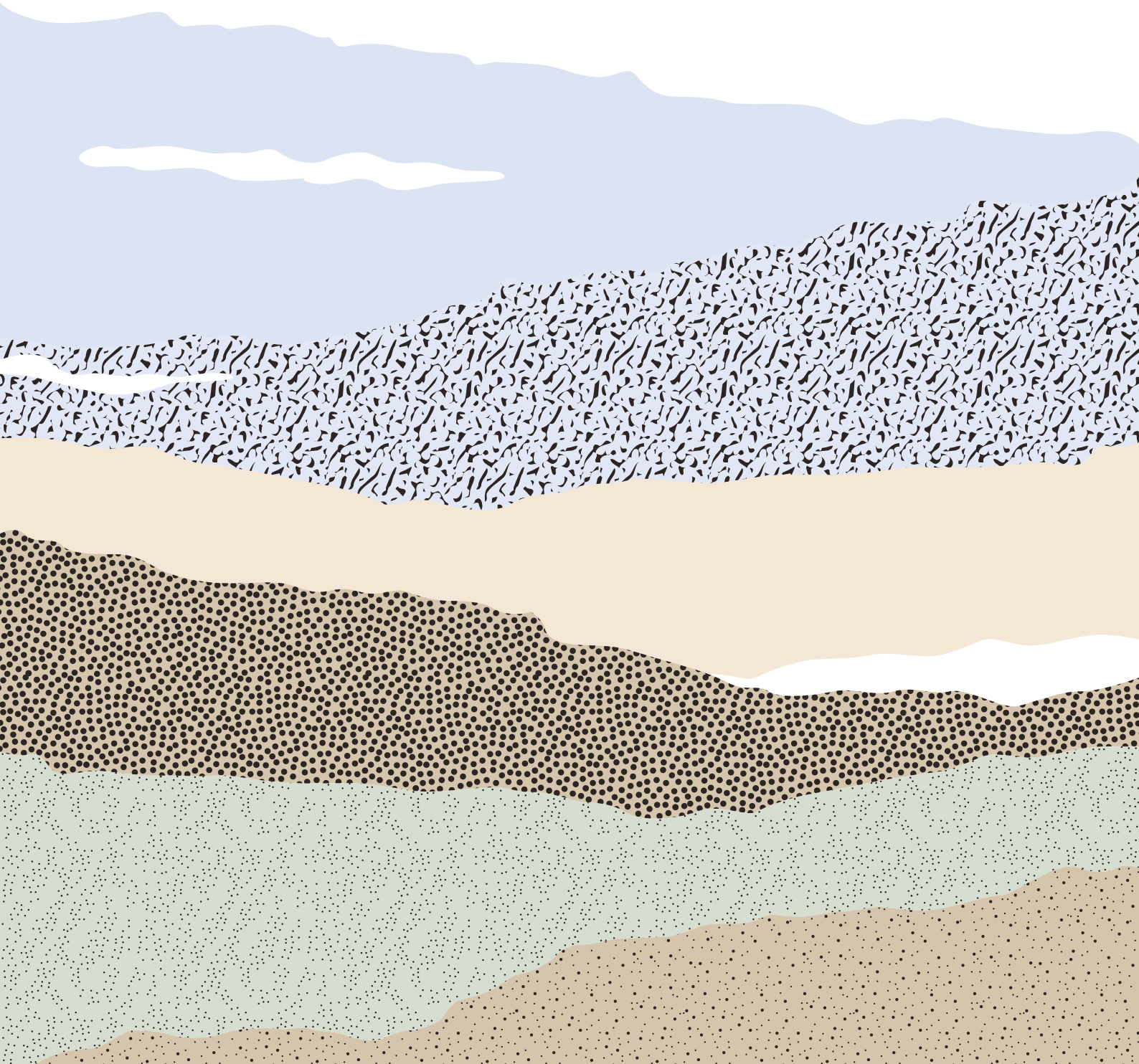
Marna Banggara Rewilding Project

The college has also partnered with the Marna Banggara Project, an ambitious initiative that aims to restore the spectacular landscape of the southern Yorke Peninsula by returning locally-extinct species to the region and reinvigorating natural ecological processes. The college's brush-tailed bettongs are part of the breeding program for this project and our students have the opportunity to help with care and eventual release into the wild. This helps instil in them a deeper understanding of habitat preservation.

A photograph of three students in outdoor gear. A young boy in a red shirt and a black cap with 'TLC' on it is looking at a book. Two girls in khaki shirts are looking at the book with him. They are outdoors, surrounded by greenery and yellow flowers. A large red circular graphic is overlaid on the left side of the image.

Action for the environment

Karna Country, 211 Tatachilla Road
PO Box 175 McLaren Vale 5171 South Australia
p 08 8323 9588
e tlc@tatachilla.sa.edu.au
ABN 44 094 272 440



TATACHILLA
LUTHERAN COLLEGE